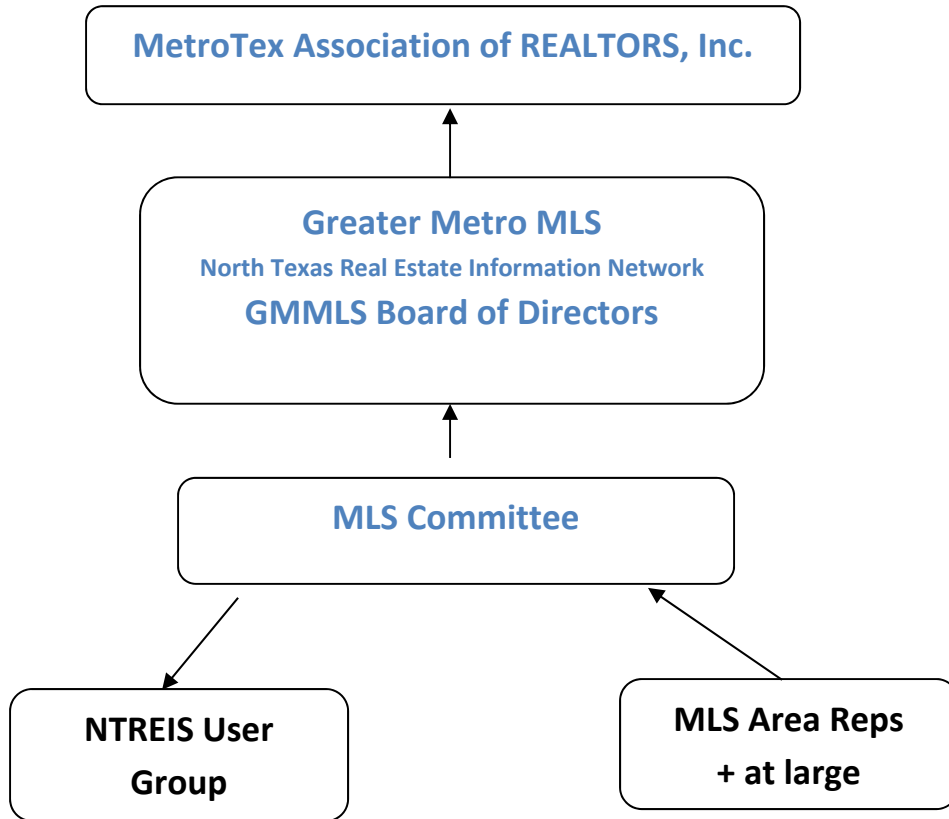


MetroTex MLS Committee



The largest NTREIS Shareholder, the MetroTex Association of REALTORS is comprised of several corporations, one of which is NTREIN, a wholly owned subsidiary of MetroTex which operates MLS Provider Services as Greater Metro MLS (GMMLS). The GMMLS Board of Directors meets quarterly and makes policy and budget decisions for the GMMLS and reports to the MetroTex Board of Directors.

The MLS Committee reports to the GMMLS Board of Directors and is comprised of representatives throughout our geographic area (usually elected at area meetings) plus a few "at large" seats. The Committee reviews MLS enhancement requests and MLS compliance issues and appeals. The Committee also hears Keycard violations and appeals. The MLS Chair serves as our representative to NTREIS User Group.

MetroTex also selects representatives to serve on other NTREIS Committees and NTREIS Board of Directors and as Shareholder representative.

