

# Welcome to MetroTex!

Make sure to check in!



WIFI: Kinwest \_ Guest  
Password: mtex\_guest23





# Who Are We?

## MetroTex Association of REALTORS®

- Established 1917
- Over 26,000 members
- Six physical locations across the metroplex



# Let's Connect!

Follow us on:



[www.mymetrotex.com](http://www.mymetrotex.com)



[www.mymetrotex.org](http://www.mymetrotex.org)



# Contact Us

## Main Office

214.637.6660

## Main Fax

214.637.5951

## Address

1701 Kinwest Pkwy  
Irving, TX 75063

## Business Hours

8:30 a.m. – 5:00p.m.\*  
Monday – Friday

## MLS Department

214.540.2755

[mls@dfwre.com](mailto:mls@dfwre.com)

## Member Services

214.540.2745

[memberservices@dfwre.com](mailto:memberservices@dfwre.com)

## Accounting

800.878.4166

[accounting@dfwre.com](mailto:accounting@dfwre.com)

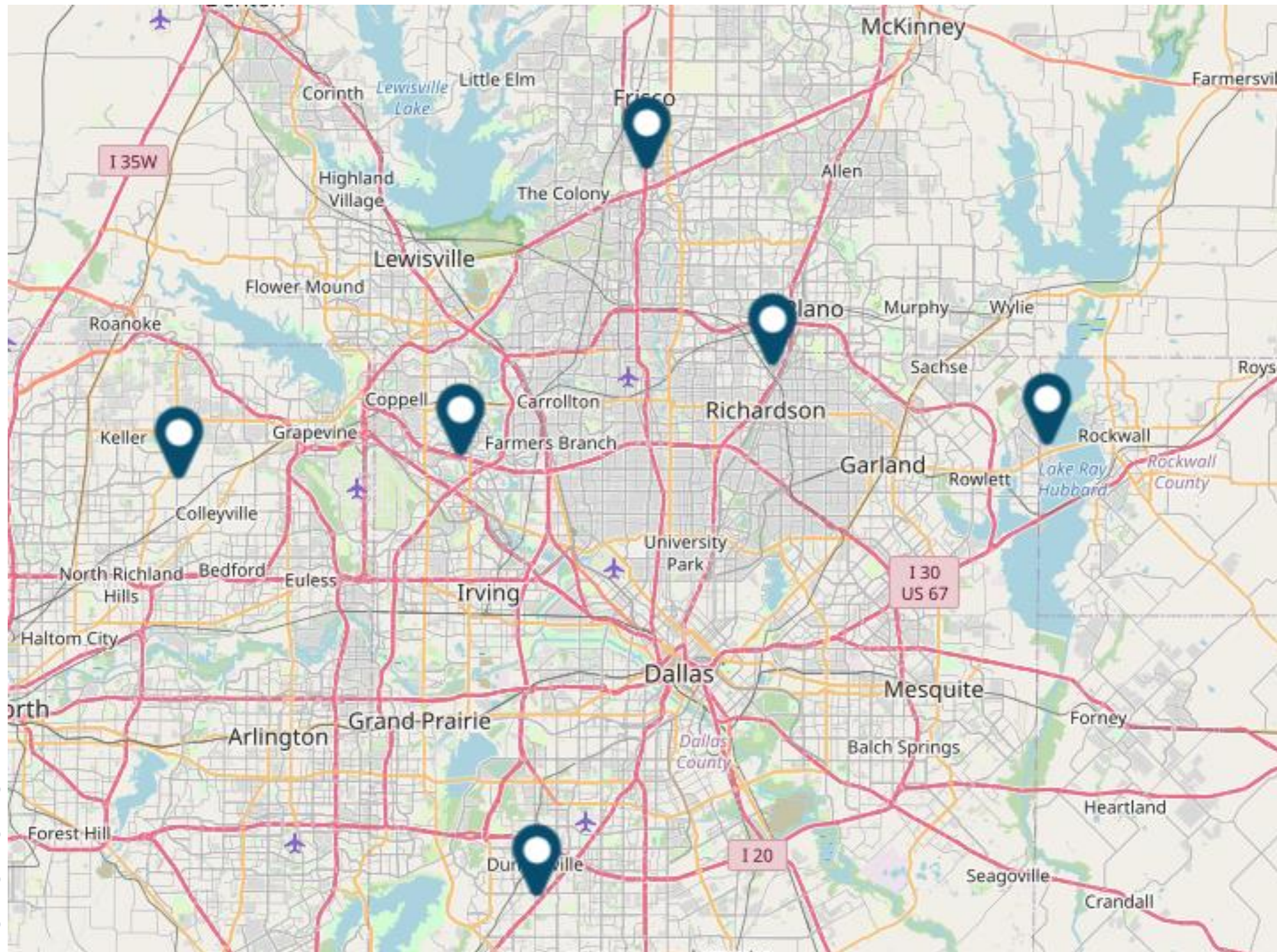
## Professional Development

214.540.2751

[professionaldevelopment@dfwre.com](mailto:professionaldevelopment@dfwre.com)



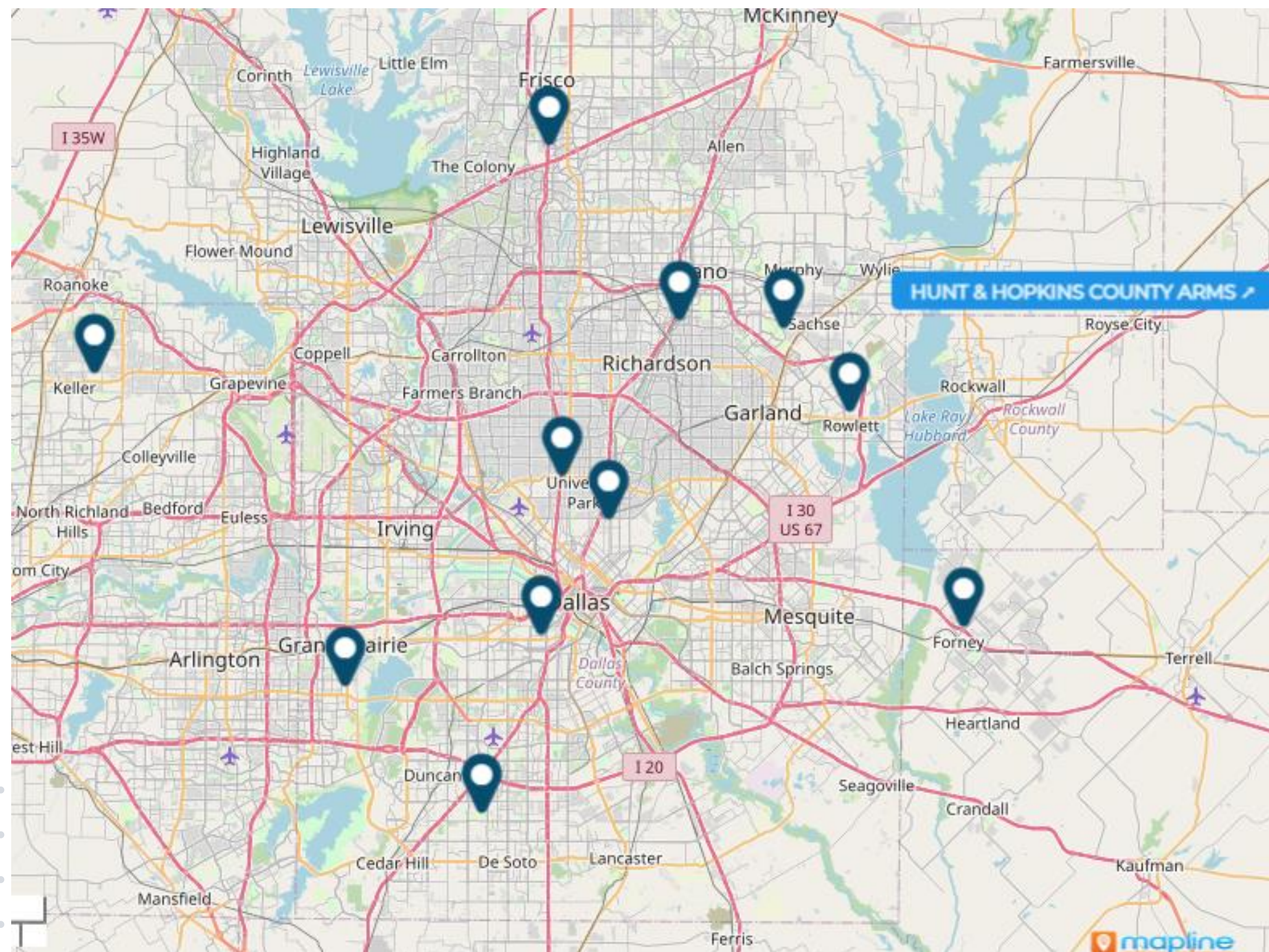
# Locations



6 Locations



# Area REALTOR® Meetings



- East Dallas
- Far North Dallas
- Frisco
- Garland
- Grand Prairie
- Hopkins County
- Hunt County
- Kaufman County
- Northeast Tarrant County
- Oak Cliff
- Oak Lawn/Park Cities
- Rowlett/Rockwall
- Southwest Dallas



Area REALTOR® Meetings



# Featured MetroTex Benefits



**In Demand, On Demand**  
CE classes you need, whenever and wherever you are.



**Proactive Safety**  
Real-time identity verification from the palm of your hand.



**Stay in the Know**  
Authentic, journalistically sound industry news.



**MLS Access**  
The MLS platform you need, at exclusive member rates.



**MetroTex Commercial Data Exchange**  
Advanced tools and lead management for \$175/month.



**Access Latin America**  
Latin America's largest MLS, with listings from 22+ countries.

Plus so much more! →



My Benefits

# MLS & Key Services

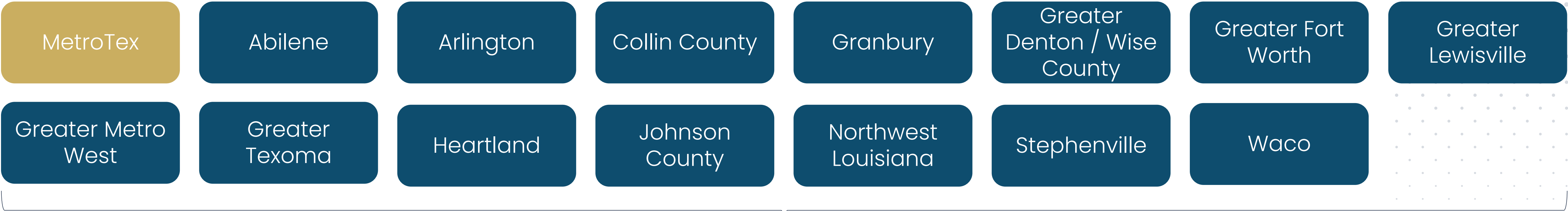




# Who Are We?

NTREIS: North Texas Real Estate Information Systems

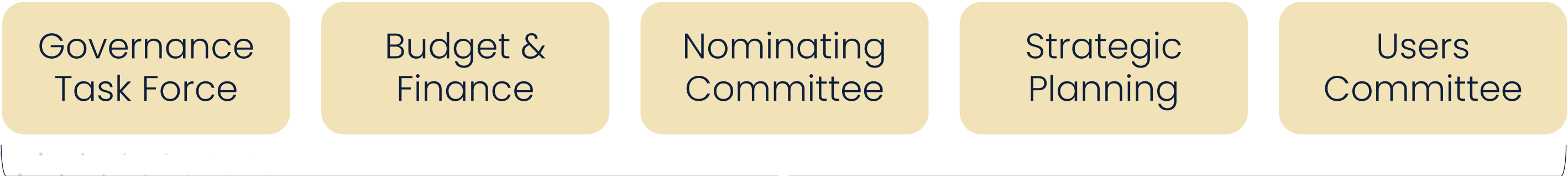
## Participating Associations



Representation on and Recommendations to



## NTREIS Committees & Task Forces



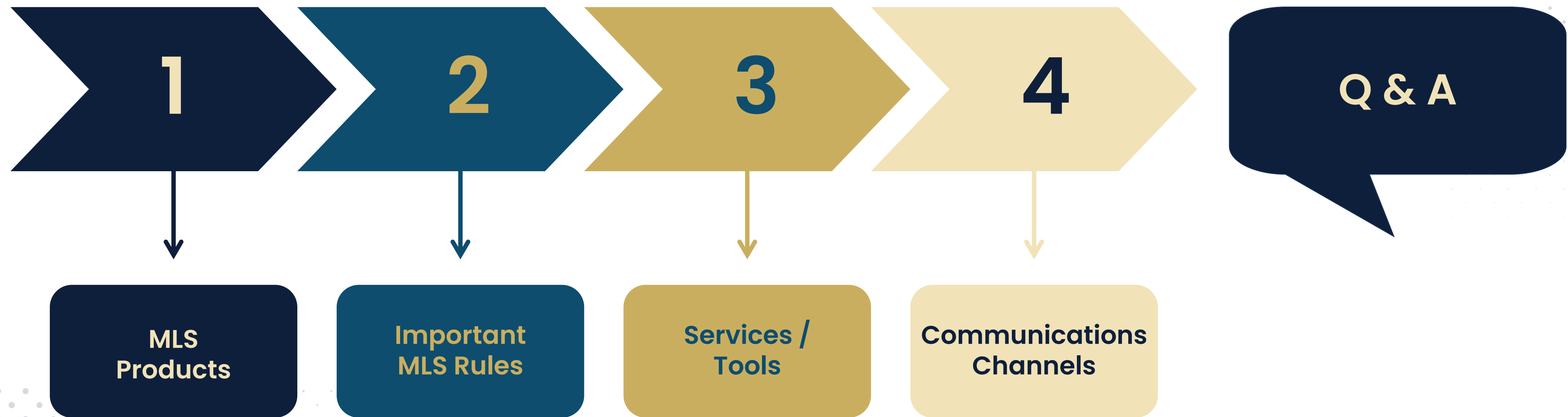
Recommendations to





# Objectives

---





# Your MLS Products



## Matrix

- Your MLS system
- Use on any browser on PC or tablet



## zipForm

- All-in-one transaction management system provided by Texas REALTORS®
- Approved forms just a few clicks away



## Instanet

- Access and manage all forms, contracts, and documents
- Use any computer with internet access



## Realist Tax

- Tax data from all counties in Texas
- Census reports, school information, mailing labels, and foreclosure activity



## RPR

- Comprehensive data, powerful analytics, and client-friendly reports
- Created by NAR and 100% owned by REALTORS®



## Cloud Suite

- Cloud CMA, Cloud MLX, and Cloud Streams
- Convenient alternative to the main MLS system



# Clear Cooperation Policy

**Within one (1) business day of marketing a property to the public, the listing broker must submit the listing to the MLS for cooperation with other MLS participants. Public marketing includes, but is not limited to, flyers displayed in windows, yard signs, digital marketing on public facing websites, brokerage website displays (including IDX and VOW), digital communications marketing (email blasts), multi-brokerage listing sharing networks, and applications available to the general public. (Adopted 11/19)**



# Data Input Sheets

Residential Data Input  
Sheets



Satisfy MLS Rules  
7.07 and 7.26

Take on Listing  
Appointment



Ensure Accuracy of  
Information

Access via Instanet,  
upload to Matrix





# Listing Procedures

## MLS Rules: Section 7

### Deadlines

- 72 Hour Deadlines
  - Listing Input
  - Status Change

### Data

- Required to provide accurate data

### Duplicates

- Duplicate Listings

### Showings

- Listings shall be available for showing once the listing is Active in the MLS
- Exception: Coming Soon Status

### Description

- Property description (Public Remarks)
- Fair Housing guidelines
- No contact info (including email, web address, text services, etc.)

### Directions

- Public Driving Directions must have actual directions to the property. (Not "Use GPS" or "See Map," etc.)



# Listing Statuses

## Initial Statuses

### INC – Incomplete

- Work in progress
- Can be seen by listing agent, listing broker/manager, listing office administrators, and MLS staff.
- Can be updated and saved as Incomplete until the listing is ready to be made available to other MLS subscribers.
- Will be purged from the system if not updated in 30 days.
- Must be changed to Active or Coming Soon prior to any other status changes.

### CSN – Coming Soon

- Cannot be shown
- Allows seller to prepare home for showings, needed repairs, or legal matters.
- Will automatically enter Hold Status after 30 days.
- Must be changed to Active prior to any other status changes.
- Is available only to MLS Participates and is not distributed to 3<sup>rd</sup> parties.



# Listing Statuses

## Active Statuses

### ACT – Active

- Must be available for showings.
- Will expire on the expiration date entered by the agent.

### AC – Active Contingent

- Still available for showings.
- Seller has accepted an offer but will entertain backup offers.
- Will expire on the expiration date entered by the agent.

### AKO – Active Kick Out

- Still available for showings.
- Seller has accepted an offer contingent upon sale of another property by the Buyer.
- Will expire on the expiration date entered by the agent.

### AOC – Active Option Contract

- Still available for showings.
- Seller has accepted an offer but Buyer is exercising the option period from the sales contract.
- Will expire on the expiration date entered by the agent.





# Listing Statuses

## Final Statuses

### PND – Pending

- Property has an offer with no contingencies, Kick Outs, or options.
- Does not expire.

### WTH – Withdrawn

- No longer available for showings.
- Cannot be relisted with another broker. Will expire on the original expiration date entered by agent.

### CAN – Cancelled

- No longer available for showings.
- Seller is free to relist with another broker.

### H – Hold

- Property is temporarily unavailable for showings.
- Listing agreement still in place and will expire on original expiration date entered by agent.

### EXP – Expired

- Listing Has Expired.

### C – Closed

- Listing has sold or leased.





# Listing Distribution

Distribution is a decision made by the Broker or Seller.



Distribution of listings to Realtor.com and 3<sup>rd</sup> party sites are handled by NTREIS.



Listings are also distributed to more than 750 other websites via List Hub.





# MLS Rules

## Section 8

### Selling Procedure

- Follow showing instructions
- Fines for not submitting status changes
- Reporting of sales information

## Section 9

### Prohibitions

- Sharing of passwords
- Waiver form for office staff and assistants

## Section 11

### Compliance

## Section 12

### Enforcement

## Section 13

### Confidentiality

## Section 16

### Use of MLS Information

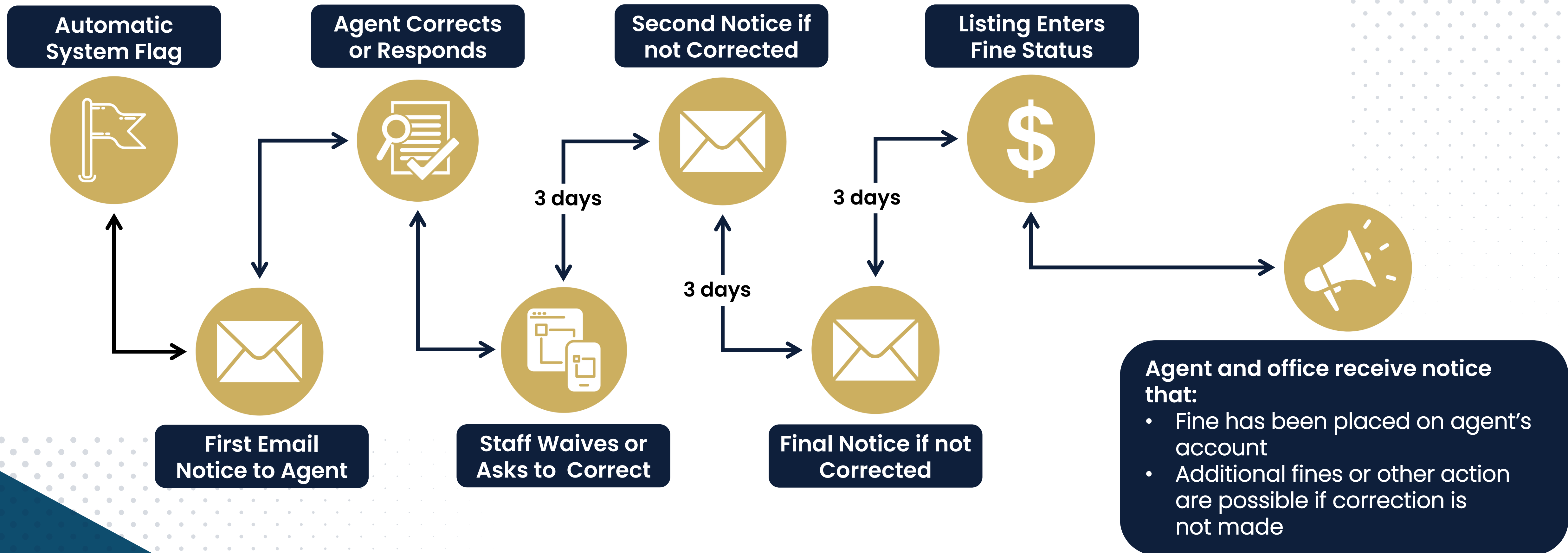
## Section 17

### IDX Rules

## Section 21

### Standards of Conduct

# Data Checker





# Complaints

## MLS Procedure / Keybox Rule Violations

- Agent may file a complaint with MLS

## Clear Cooperation Policy Violations

- Must be in writing
- Submitted at  
<https://www.mymetrotex.com/clearcoop>
- Must include
  - Name of listing agent and listing office
  - Proof of violation that is clear, strong, convincing (i.e. photograph, web link)
- Fines for violations of Clear Cooperation Policy will range from \$1,000 to \$5,000



# MLS Classes



**MT METROTEX**  
Association of REALTORS®

**M.A.P.S. Certification**

## MLS Academy for Professional Success

### Get a quarter of MLS fees for free!

Navigate through our 6 course curriculum to receive the MAPS certification and your free quarter of MLS fees! Course selection is designed to give students a comprehensive knowledge base of the various MLS applications available to them. All of these courses are instructor led, free to MetroTex MLS subscribers and are available through virtual live stream from our GoToWebinar Channel. Email [mls@dfwre.com](mailto:mls@dfwre.com) upon completion.

*You must attend the 5 required courses then choose one of the 2 elective courses.*

*You are eligible to earn your MAPS credit one time only.*



#### Five Required Courses

- Advanced Matrix
- Managing Your Listings OR Listing 101
- Client Management
- Accessing Property/Realist Tax
- Intro to RPR

#### Choose One Elective

- zipForm OR Intro to Instanet

#### Then Receive

- One free quarter of MLS service

#### More MLS Classes Here!

- Intro to Matrix
- Surfing the Cloud
- Mobile RPR



MLS Classes



# Clases de MLS en español



**¡MetroTex ahora ofreciendo  
clases de **MLS en español!****



¿Alguna vez ha deseado poder aprender más sobre MLS en una clase en español? ¡Ahora puede hacerlo!

Las clases de español de MLS estarán disponibles durante el año con un instructor que habla español.



Clases en español

# MLS Communication

---

- Newsletters mentioned earlier
- MLS Training Classes
- Matrix Landing Page news and alerts
- Clarity Dashboard
- Meetings: Area REALTOR® Meetings and Office Meetings
- Social Media
- Automatic communications from Data Checker







Hi Hope, Welcome to eKEY®!  
eKEY Professional Serial #5464744



MY KEYBOXES



MESSAGES



DATA AT  
THE DOOR



SUPRAWEB



ROSTER



HOTSHEETS



LISTINGS



MY  
BUYERS



BUYER  
FEEDBACK

2 SHOWING NOTIFICATIONS



OPEN  
SHACKLE

OBTAIN KEY



ALERT



FLASHLIGHT



UPDATE



MORE

# Key Services

- Additional Service
- Fiscal Year Service: July 1 – June 30
- Supra eKey App
- For pricing and to set up, contact Member Services:

[memberservices@dfwre.com](mailto:memberservices@dfwre.com)  
214.540.2745



# Keyboxes

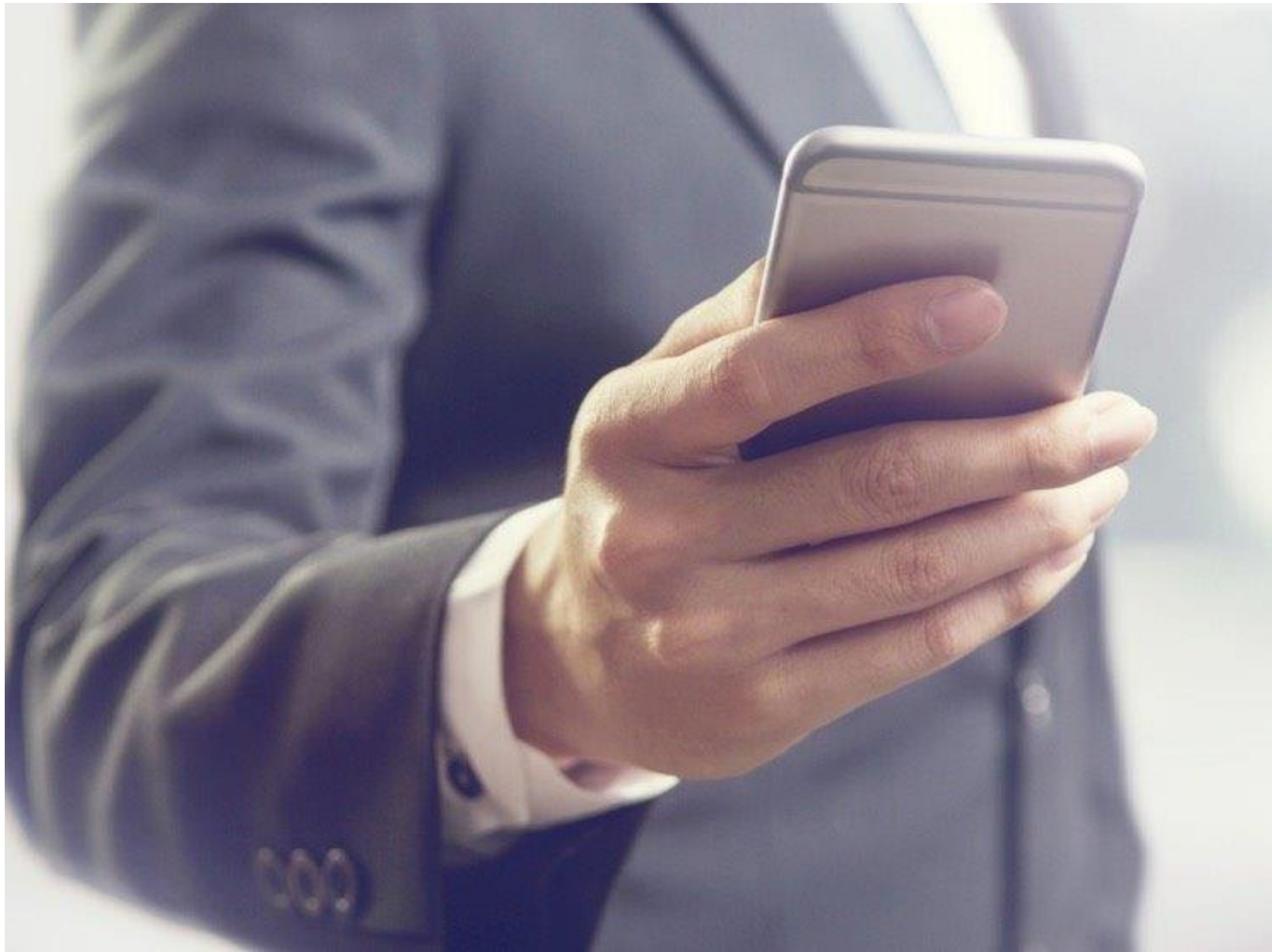
---

- Keyboxes sold separately at \$129.90 each
- Available at all MetroTex locations
- BTLE, Bluetooth
- Access keybox and activity reports through:

[supraekey.com](https://supraekey.com)



# Vendor Contact Information



For after hours technical support:

**Matrix & Transaction Desk**

Monday – Friday, 7am – 12am

Saturday – Sunday, 10am – 10pm

800.297.6367

**zipForm**

Monday – Friday, 6am – 10pm

800.383.9805

**Supra**

Monday – Sunday, 8am – 9pm

877.699.6787

# Additional Contact Information

MLS Department	Member Services	Realtor.com	Texas REALTORS®
Monday – Friday 8:30am – 5pm	Monday – Friday 8:30am – 5pm	Monday – Friday 8am – 7pm	Monday – Friday 9am – 5pm
214.540.2755	214.540.2745	800.878.4166	512.480.8200
<a href="mailto:mls@dfwre.com">mls@dfwre.com</a>	<a href="mailto:memberservices@dfwre.com">memberservices@dfwre.com</a>		

Showing Time	BrokerBay	TREC
Monday – Saturday 8am – 8pm	Monday – Friday 7am – 9pm	Monday – Friday 7am – 6pm
Sunday, 8am – 6pm	800.257.1242	512.936.3000
817.858.0055	<a href="mailto:support@brokerbay.com">support@brokerbay.com</a>	



A blurred background image showing several hands raised in the air, suggesting a meeting or a Q&A session. The hands are in various positions, some fully extended, others partially raised. The background is dark and out of focus, with some greenery visible on the left.

# Questions?





# Government Affairs & TREPAC





# TREPAC FAQs

## How does TREPAC affect real estate?

Government's role in real estate is steadily increasing at all levels. To maintain a healthy climate for real estate in Texas and preserve real property rights, Texas REALTORS® must participate in the political process through TREPAC.

## Where do TREPAC dollars go?

All funds eligible to be invested in pro-real estate candidates running for political office are expended for that purpose.

## How can REALTORS® support TREPAC?

Your TREPAC investment helps put pro-real estate candidates in office to protect your livelihood and profession. In return for TREPAC's hard work, we ask that you invest your fair share of \$50.

## Which political party does TREPAC support?

WE ARE THE REALTOR® PARTY; TREPAC is not affiliated with any political party. The program and platform of the individual candidates, board recommendations, and ultimate action by TREPAC trustees determine who TREPAC supports—not the candidate's party affiliation.

# TREPAC Disclaimer

CONTRIBUTIONS ARE NOT DEDUCTIBLE FOR FEDERAL INCOME TAX PURPOSES. CONTRIBUTIONS TO THE TEXAS REALTORS® POLITICAL ACTION COMMITTEE (TREPAC) AND THE TEXAS ASSOCIATION OF REALTORS® FEDERAL POLITICAL ACTION COMMITTEE (TAR FEDPAC)—WHICH MAKES CONTRIBUTIONS TO THE REALTORS® POLITICAL ACTION COMMITTEE (RPAC)—ARE VOLUNTARY AND MAY BE USED FOR POLITICAL PURPOSES. THE AMOUNT INDICATED IS MERELY A GUIDELINE, AND YOU MAY CONTRIBUTE MORE OR LESS THAN THE SUGGESTED AMOUNT. YOU MAY REFUSE TO CONTRIBUTE WITHOUT REPRISAL, AND THE NATIONAL ASSOCIATION OF REALTORS®, TEXAS REALTORS®, AND ITS LOCAL ASSOCIATIONS WILL NOT FAVOR OR DISADVANTAGE ANYONE BECAUSE OF THE AMOUNT CONTRIBUTED. UNTIL THE RPAC ANNUAL GOAL IS MET, 70% OF AN INDIVIDUAL'S CONTRIBUTION GOES TO TREPAC AND MAY BE USED TO SUPPORT STATE AND LOCAL CANDIDATES; THE REMAINING 30% IS SENT TO TAR FEDPAC TO SUPPORT FEDERAL CANDIDATES AND IS CHARGED AGAINST YOUR LIMITS UNDER 52 U.S.C. 30116. (EXCEPTION: 100% OF AN INDIVIDUAL'S CONTRIBUTION GOES TO TREPAC IF THE INDIVIDUAL IS AN EMPLOYEE OF AN AFFILIATE MEMBER OF TEXAS REALTORS®.) AFTER THE RPAC ANNUAL GOAL IS MET, 100% OF AN INDIVIDUAL'S CONTRIBUTION GOES TO TREPAC AND MAY BE USED TO SUPPORT STATE AND LOCAL CANDIDATES. YOU MAY CONTACT THE TEXAS REALTORS® POLITICAL COMMITTEE ADMINISTRATOR AT 800-873-9155 TO OBTAIN INFORMATION ABOUT YOUR CONTRIBUTIONS.



TREPAC



A woman with short dark hair, wearing a teal sleeveless top, is looking at a tablet. In the background, there is a large image of the Earth (globe) and some faint, illegible text. The overall theme is professional development.

# Professional Development





# The REALTOR® Family

Local



State



National



Your REALTOR® Membership



# Who Are We?

## Professional Development Department



**Roxie Glenn**  
VP of Member  
Engagement



**Vanessa  
Akin-Adesola**  
Global & Diversity  
Programs  
Manager



**Kristi Kay Spikes**  
Commercial  
Programs  
Manager



**Natalie Godfrey**  
Professional  
Development  
Program  
Manager



**Marisela  
Martinez**  
Professional  
Development  
Coordinator



**Everett York**  
Professional  
Development  
Coordinator



**Maia Vereen**  
Professional  
Development  
Coordinator



# Benefits from NAR and Texas REALTORS®

- Financial Solutions
- Texas REALTORS® Legal Hotline: 512-480-8200
- Home & Auto Insurance
- Risk Management
- Office & Business Solutions

- Technology & Wireless Solutions
- Automotive, Travel, & Entertainment Solutions
- And more!



# NAR Education Requirements



Two courses must be completed in Cycle 8 (Jan. 1, 2025 – Dec. 31, 2027)

**Code of Ethics\***

Completed by Orientation or The NAR Code of Ethics course

**Fair Housing**

Completed by NAR's online Fair Haven course, AHWD, or Bias Override

# What About TREC?



- State government agency
- Licensing
- Regulation and enforcement



# TREC Education Requirements

During your **FIRST TWO YEARS** of licensure, TREC requires you take a total of **98** hours of Sales Apprentice Education (SAE).



# Graduate REALTOR® Institute (GRI)

To earn the GRI Designation, all three parts of the program must be completed. The total cost of the designation is \$765.

Get more details here!



GRI

## Business Skills

**\$255**

- Seller Services
- Buyer Services
- Real Estate Technology
- Environment and Green Building

## Contracts to Close

**\$255**

- Finance and Lending
- Residential Contracts
- Appraisals, CMAs, and Pricing
- Diversity and Fair Housing

## Brokerage

**\$255**

- Professional Standards
- Policies and Procedures
- Brokerage and Agency Relations
- Business Development



# Commercial Program



**Kristi Kay Spikes**

Commercial Programs Manager

[kristis@dfwre.com](mailto:kristis@dfwre.com)



Delivering exceptional education, unparalleled networking opportunities, and comprehensive resources to empower MetroTex members excelling in the field of Commercial Real Estate. Our commitment is to support industry professionals with cutting-edge tools and insights that drive success in a competitive market.



Learn more about the  
Commercial Program!



Commercial Program

# Texas Accredited Commercial Specialist (TACS)

To earn the TACS Designation, all three parts of the program must be completed. The total cost of the designation is \$765.

TACS 1

**\$255**

Intro to Commercial  
Real Estate

TACS 2

**\$255**

Commercial Real  
Estate Property  
Development

TACS 3

**\$255**

Commercial Real  
Estate Marketing and  
Negotiation

Get more details here!



TACS



# Global Program



**Vanessa Akin-Adesola**

Global & Diversity Programs Manager

[vanessaa@dfwre.com](mailto:vanessaa@dfwre.com)



The mission of the MetroTex Global Business Council is to provide a collaborative system of information, resources, networking and skills training for all members. These services will enhance legal, diverse cultural and business protocol awareness of the global real estate environment.



Learn more about the  
Global Program!



Global Program

# Global & Diversity Education

## Certified International Property Specialist



The CIPS designation requires completion of five full-day courses focusing on the critical aspects of international real estate transactions. CIPS designees are connected to an influential network of over 3,500 professionals who turn to each other first when looking for referral partners.

## At Home with Diversity



The course work for this certification is designed to enable you to work successfully with and within a rapidly changing multicultural market. It will help you to learn diversity sensitivity, how it applies to U.S. fair housing laws in your business, and ways to develop professional guidelines for working with people in the increasingly multicultural real estate market.

## Resort & Second Home Property Specialist



This certification is designed for REALTORS® who facilitate the buying, selling, or management of properties for investment, development, retirement, or second homes in a resort, recreational and/or vacation destination are involved in this market niche.



# Advisory Groups



**AFFILIATE**  
ADVISORY GROUP



**BUDGET & INVESTMENT**  
ADVISORY GROUP



**COMMERCIAL**  
ADVISORY GROUP & FORUM



**COMMUNITY  
OUTREACH**  
ADVISORY GROUP



**DIVERSITY &  
FAIR HOUSING**  
ADVISORY GROUP & FORUM



**GLOBAL**  
ADVISORY GROUP & FORUM



**GOVERNMENT AFFAIRS**  
ADVISORY GROUP & FORUM



**LEASING & PROPERTY  
MANAGEMENT**  
ADVISORY GROUP & FORUM



**MLS**  
COMMITTEE



**PROFESSIONAL  
DEVELOPMENT**  
ADVISORY GROUP



**TRLP ALUMNI**  
ADVISORY GROUP



**VOLUNTEER  
LEADERSHIP**  
ADVISORY GROUP



**YOUNG PROFESSIONALS  
NETWORK**  
ADVISORY GROUP & FORUM

Some Advisory Groups have prerequisites  
or are by appointment only.

Get more details here!



Advisory Groups

# Forums



Get more details here!



Advisory Groups





***OPEN TO REAL ESTATE PROFESSIONALS***

**Your All-in-One Hub for Real Estate Success**



**On-Demand  
CE Courses**



**Expert Tools  
& Resources**



**Networking &  
Advisory Groups**

Available Anytime, Anywhere.

**Explore MyMetroTex Campus Today!**



A blurred background image showing several hands raised in the air, suggesting a meeting or a Q&A session. The hands are in various positions, some fully extended, others partially raised. The background is dark and out of focus, with some greenery visible on the left.

# Questions?



# MetroTex e.News



- **Two newsletters each week**
  - Wednesday: Industry focused
  - Friday: MetroTex focused
- Plus, opt-in to any of our specialty newsletters delivered once a month:
  - Global
  - Commercial
  - Spanish-language

# Update Your Communication Preferences



©2024 MetroTex Association of REALTORS®  
1701 Kinwest Parkway, Irving, Texas 75063

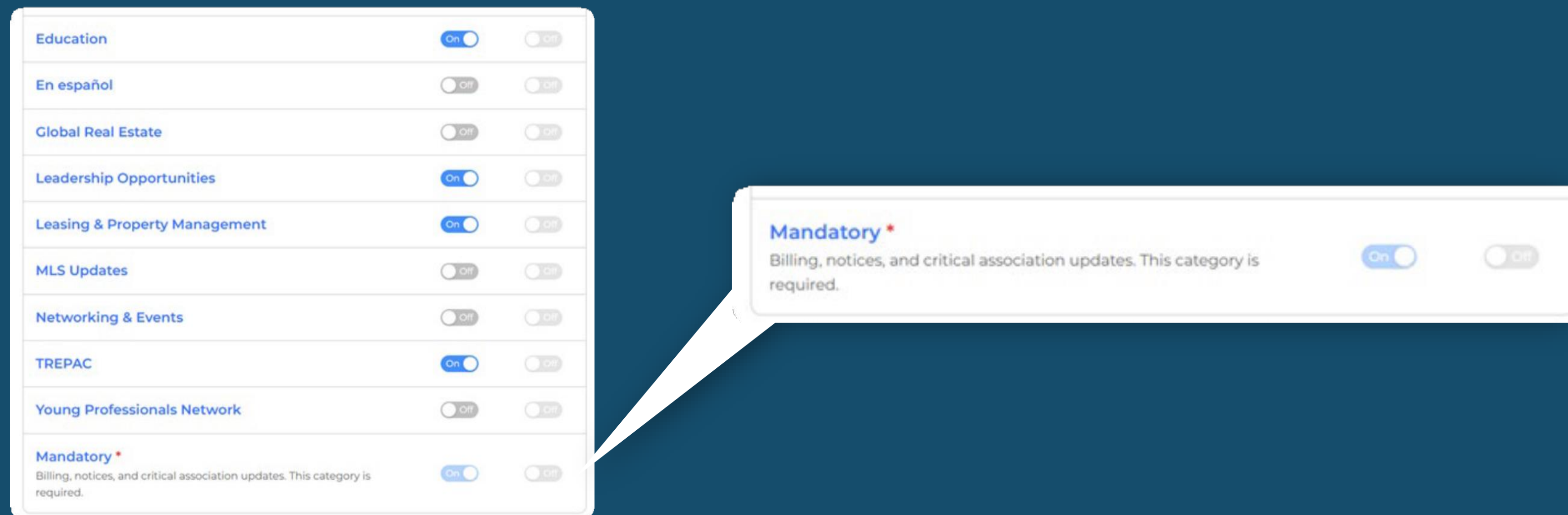
[Update Your Email Preferences](#)

[Update Your Email Preferences](#)

- Find the "Update Your Email Preferences" link at the bottom of your emails from communications@dfwre.com
- Click the link to access your notification settings

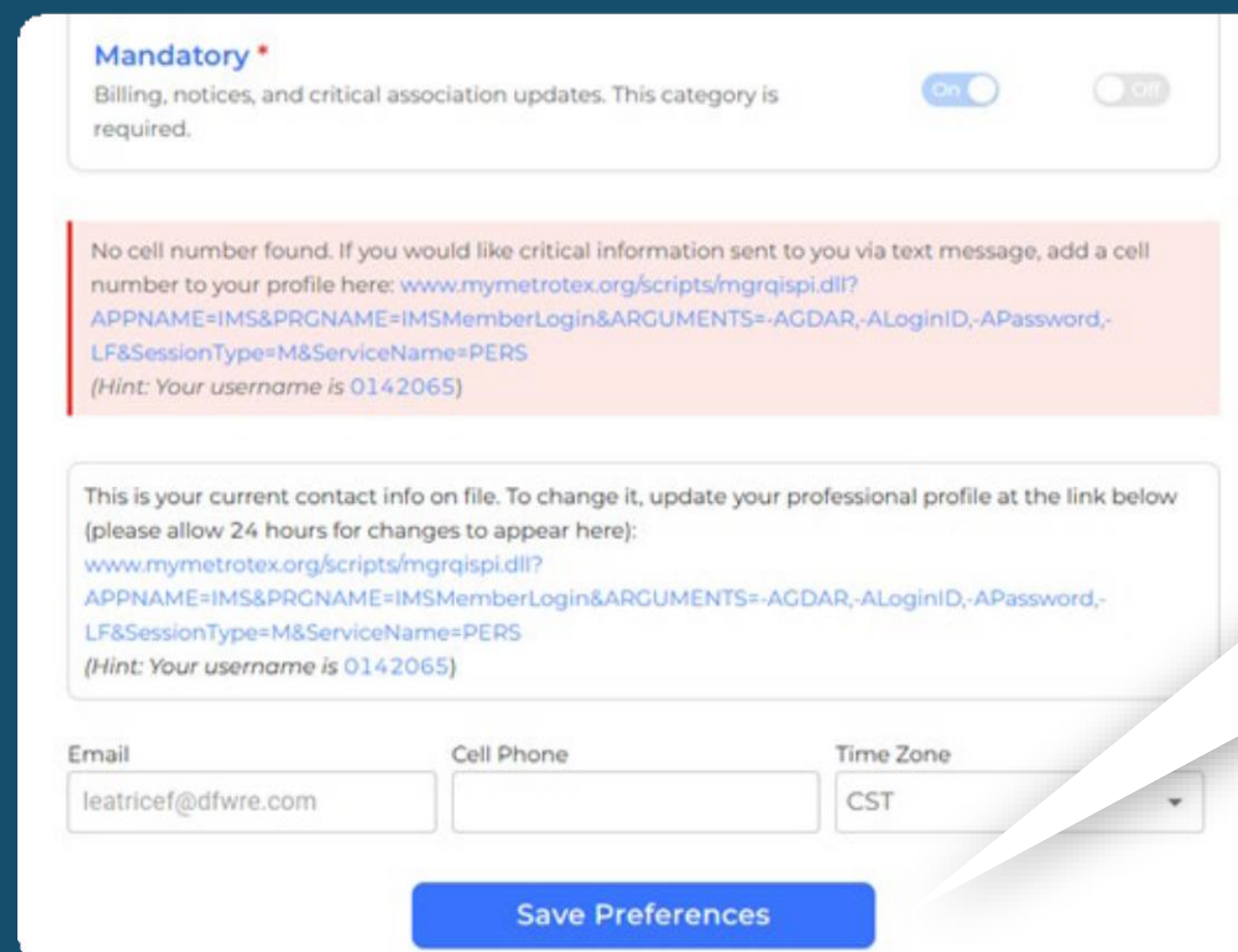


# Turn on Text Notifications for Mandatory Updates



- Search for "Mandatory"
- Select the Text option
- If needed, enter your phone number

# Save & Stay Informed



**Mandatory \***  
Billing, notices, and critical association updates. This category is required. ☒ On ☐ Off

No cell number found. If you would like critical information sent to you via text message, add a cell number to your profile here: [www.mymetrotex.org/scripts/mgrqispi.dll?APPNAME=IMS&PRGNAME=IMSMemberLogin&ARGUMENTS=-AGDAR,-ALoginID,-APassword,-LF&SessionType=M&ServiceName=PERS](http://www.mymetrotex.org/scripts/mgrqispi.dll?APPNAME=IMS&PRGNAME=IMSMemberLogin&ARGUMENTS=-AGDAR,-ALoginID,-APassword,-LF&SessionType=M&ServiceName=PERS)  
(Hint: Your username is 0142065)

This is your current contact info on file. To change it, update your professional profile at the link below (please allow 24 hours for changes to appear here):  
[www.mymetrotex.org/scripts/mgrqispi.dll?APPNAME=IMS&PRGNAME=IMSMemberLogin&ARGUMENTS=-AGDAR,-ALoginID,-APassword,-LF&SessionType=M&ServiceName=PERS](http://www.mymetrotex.org/scripts/mgrqispi.dll?APPNAME=IMS&PRGNAME=IMSMemberLogin&ARGUMENTS=-AGDAR,-ALoginID,-APassword,-LF&SessionType=M&ServiceName=PERS)  
(Hint: Your username is 0142065)

Email:  Cell Phone:  Time Zone:

**Save Preferences**

Save Preferences

- Click “Save Preferences” and your updates take effect immediately
- Receive texts for important updates like billing and mandatory notices
- Stay informed and turn this on today



# Billing & Payments Made Easy



## Member Portal

Manage your account anytime



## Billing Calendar

Stay on top of deadlines



## AutoPay

Hassle-free payments



Scan to Get  
Started